

# Career Finder: AI powered career guider

Neil Sen Easow  
*Computer Science Engineering*  
 Amal Jyothi College of Engineering  
 Kottayam, Kerala, India  
 neilseneasow@gmail.com

Nandhu Babu  
*Computer Science Engineering*  
 Amal Jyothi College of Engineering  
 Kottayam, Kerala, India  
 nandhnbabu2026@cs.ajce.in

Rajalakshmi Shankar  
*Computer Science Engineering*  
 Amal Jyothi College of Engineering  
 Kottayam, Kerala, India  
 laxmi.achu003@gmail.com

Rudra Pratap Singh  
*Computer Science Engineering*  
 Amal Jyothi College of Engineering  
 Kottayam, Kerala, India  
 rudrapratapsingh@cs.ajce.in

Dr. Juby Mathew  
*Computer Science Engineering*  
 Amal Jyothi College of Engineering  
 Kottayam, Kerala, India  
 jubymathew@amaljyothi.ac.in

**Abstract—** This paper discusses the overall design, development, and deployment of an AI-based career recommendation system, organized into four interdependent modules: User Interface (UI) Design and Development, Backend Development and API Management, AI Model Integration and Recommendation Engine, and Database and Deployment. The platform leverages cutting-edge technologies such as React.js for a dynamic front-end, Flask for robust backend API development, OpenAI GPT-based models (or alternatives like Hugging Face Transformers or LLaMA) for personalized career insights, and MongoDB for scalable data storage. The UI module prioritizes creating an intuitive and responsive user experience, incorporating features like dynamic forms and skill gap analysis dashboards. The Backend module focuses on developing secure and efficient RESTful APIs to handle user data processing and AI model communication. The AI Model Integration module delves into natural language processing (NLP) techniques to analyze user inputs, match skills, and generate tailored career recommendations. The Database and Deployment module is focused on data management that scales and is secure on cloud systems such as AWS, Azure, or Google Cloud, with authentication through Firebase and CI/CD through GitHub Actions. The project focuses on team collaboration, with tools such as Jira and GitHub used for easy integration between modules and effective development practices. This paper lays out the process of development, challenges encountered, and possible improvements in the future of the platform.

**Keywords—** Career recommendation, AI, React.js, Flask, OpenAI GPT, MongoDB, user interface, backend development, machine learning, NLP, cloud deployment, REST API, skill gap analysis. **Introduction.**

## I. INTRODUCTION

The contemporary job market is characterized by its dynamic and often unpredictable nature, presenting individuals with a complex landscape of career opportunities and challenges. Rapid technological advancements, evolving industry demands, and the increasing globalization of the workforce have collectively contributed to a significant paradigm shift in how individuals perceive and pursue their professional trajectories. In this environment, the traditional methods of career exploration and job searching are often rendered inadequate, failing to provide the personalized guidance and insights necessary for informed decision-making. Individuals seeking to navigate this intricate landscape often find themselves overwhelmed by the sheer volume of available information and the lack of personalized direction. Conventional job search platforms and career counseling services

frequently adopt a one-size-fits-all approach, neglecting the unique skills, interests, and aspirations of each individual. This impersonal approach can lead to misaligned career choices, job dissatisfaction, and a sense of professional stagnation. Moreover, the lack of real-time insights into emerging industry trends and the evolving skill requirements further exacerbates the challenges faced by job seekers. To address these critical shortcomings, this paper introduces the design and implementation of "Career Finder," an innovative AI-based career suggestion platform. This platform is meticulously crafted to offer users highly personalized career recommendations, leveraging the power of artificial intelligence to analyze individual profiles and extract relevant insights from up-to-date industry trends. By employing advanced machine learning algorithms and natural language processing techniques, "Career Finder" aims to bridge the gap between individual aspirations and market demands, providing users with actionable guidance to make well-informed career decisions. The platform's architecture is thoughtfully organized into four distinct but interconnected modules, each addressing specific functionalities and technical specifications to ensure the overall robustness and efficiency of the system. These modules are: (1) User Interface Design and Development, responsible for creating an intuitive and engaging user experience; (2) Backend Development and API Management, focused on developing secure and scalable APIs to handle data processing and AI model communication; (3) AI Model Integration and Recommendation Engine, dedicated to leveraging advanced AI models for personalized career insights; and (4) Database and Deployment, tasked with ensuring secure and scalable data storage and platform deployment. This modular approach not only facilitates parallel development and the application of specialized expertise but also enhances the scalability, maintainability, and adaptability of the platform. By breaking down the system into manageable components, the development team can focus on specific functionalities, ensuring that each module is optimized for performance and reliability. The following sections of this paper will delve into the detailed design, implementation, and integration of each module, highlighting the technologies employed, the methodologies adopted, and the challenges encountered during the development process. Furthermore, the paper will explore the potential impact of "Career Finder" on the future of career guidance, discussing its implications for individuals, organizations, and the broader labor market.

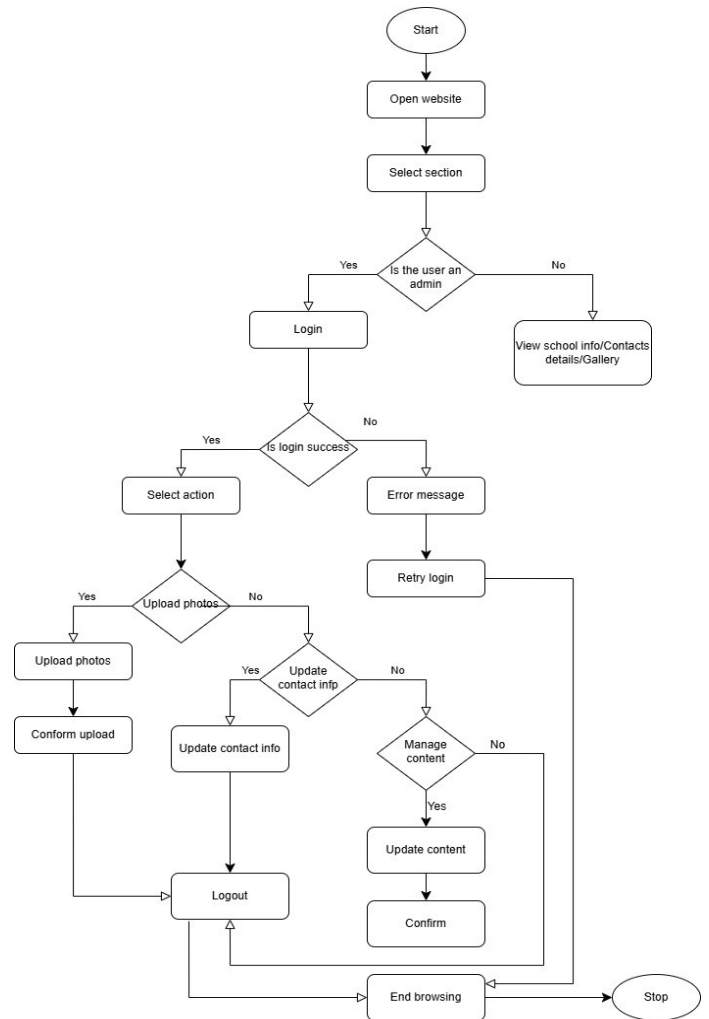
II. TECHNOLOGIES AND FRAMEWORKS

"Career Finder" is constructed using a carefully curated suite of cutting-edge technologies and frameworks, specifically selected to ensure optimal performance, robust scalability, and seamless integration across all system components. The frontend is powered by React.js, leveraging its component-based architecture and virtual DOM to create a highly dynamic and responsive user experience. This is complemented by CSS, Bootstrap, and Material-UI, which together ensure a visually stunning and consistent interface across a diverse range of devices and screen sizes. For the backend, Flask, a lightweight yet highly flexible Python web framework, is employed to develop RESTful APIs, chosen for its simplicity and extensibility, which facilitates efficient data handling and seamless communication. Secure data handling mechanisms are integral to the design of these APIs, ensuring robust protection of user information while enabling seamless communication between the frontend, backend, and AI model. The platform is designed to be compatible with a variety of Large Language Models (LLMs), including OpenAI GPT-based models, Hugging Face Transformers, and LLaMA, providing the flexibility to adapt and evolve as AI technology advances. MongoDB is utilized as the NoSQL database, chosen for its scalability, ability to handle unstructured data, and ease of integration with cloud platforms, ensuring efficient storage and retrieval of user data and career profiles. The application is intended for deployment on top-tier cloud providers such as AWS, Azure, or Google Cloud, ensuring scalability, reliability, and cost-effectiveness. Firebase Authentication is implemented to provide a secure and user-friendly system for user authentication and authorization. Finally, GitHub Actions is employed for Continuous Integration and Continuous Deployment (CI/CD), automating the build, testing, and deployment processes, which significantly accelerates development cycles and ensures the platform remains up-to-date and reliable.

III. SYSTEM ARCHITECTURE

The "Career Finder" platform adopts a meticulously crafted modular architecture, a strategic design choice that prioritizes both maintainability and scalability, enabling focused development and the integration of specialized expertise. This architecture fundamentally comprises five interconnected modules, each playing a critical role in the platform's functionality. The User Interface Design and Development module, built with React.js, creates a dynamic and interactive user experience, featuring intelligent dynamic forms for detailed user profiling, visually engaging career suggestion displays driven by AI analysis, insightful skill gap analysis dashboards, and a responsive design that ensures seamless accessibility across various devices. The Backend Development and API Management module serves as the operational core, developing and managing robust RESTful APIs with secure data handling procedures, facilitating seamless communication between the frontend, AI model, and database, alongside comprehensive testing and error handling to ensure reliability. At the heart of the platform, the AI Model Integration and Recommendation Engine module leverages Large Language Models (LLMs) to generate personalized career recommendations, fine-tuning these models and implementing sophisticated pipelines for user input processing, skill matching, and sentiment analysis through advanced NLP techniques. The Database and Deployment module addresses critical aspects of data storage and platform accessibility, designing and maintaining a scalable MongoDB database, hosting the system on leading cloud providers like AWS, Azure, or Google Cloud with secure Firebase authentication, and implementing CI/CD pipelines via GitHub Actions for automated updates and deployments, ensuring scalability, security, and reliability.

This modular approach not only facilitates parallel development and specialized expertise but also guarantees a robust, scalable, and adaptable system capable of delivering personalized career guidance in the dynamic and evolving job market.



IV. IMPLEMENTATION DETAILS

The operational efficacy of "Career Finder" is anchored in its meticulously executed implementation, a process that unfolds across four distinct modules, each engineered for precision and seamless integration. The User Interface (UI) Design and Development module, built on the versatile React.js framework, is dedicated to crafting an intuitively navigable and engaging user experience. This is realized through a component-centric architecture, promoting both code reusability and streamlined maintenance, where elements such as adaptive input forms, insightful career suggestion cards, and visual skill gap analysis charts are constructed as modular units. Inherent to this module is the deployment of dynamic forms that intelligently respond to user inputs, thereby personalizing and optimizing the data collection process. Career recommendations are presented in an accessible and visually compelling format, detailing job titles, essential skills, and potential career progressions. Skill gap analysis dashboards offer users a clear, graphical representation of areas needing enhancement, encouraging proactive professional development.

The UI's aesthetic coherence and cross-device responsiveness are assured through the strategic use of CSS, Bootstrap, and Material-UI, guaranteeing a consistent and accessible experience for all users.

The Backend Development and API Management module, leveraging the agile Flask framework, serves as the system's operational nexus, orchestrating data processing and facilitating communication between the UI, AI model, and database. This module adheres to RESTful API design principles, establishing well-structured endpoints for data exchange. User inputs are rigorously validated and securely stored within the database. The module also manages the seamless integration of AI models, transmitting user data and receiving career suggestions to ensure a continuous flow of information. Robust security protocols, including encryption and access controls, are implemented to protect user data. Comprehensive error handling mechanisms are integrated to maintain API stability and reliability.

At the platform's core, the AI Model Integration and Recommendation Engine module harnesses the power of Large Language Models (LLMs) and natural language processing (NLP) to deliver personalized career recommendations. Users can select from a range of LLMs, including OpenAI GPT-based models, Hugging Face Transformers, and LLaMA, which are fine-tuned using career profile and market trend data to enhance recommendation accuracy. NLP techniques, such as sentiment analysis, skill extraction, and topic modeling, are employed to process user inputs and extract relevant insights. A sophisticated skill-matching algorithm maps user skills to job requirements, enabling the generation of personalized job recommendations based on comprehensive data analysis.

The Database and Deployment module ensures the platform's scalability, security, and reliability. MongoDB provides a scalable and flexible database schema for storing user data, career profiles, and market trends. Cloud deployment on platforms like AWS, Azure, or Google Cloud ensures scalability and cost-effectiveness. Firebase Authentication provides secure user authentication and authorization. Continuous integration and continuous deployment (CI/CD) pipelines, implemented through GitHub Actions, streamline the build, test, and deployment processes, ensuring rapid and reliable software updates. This integrated approach to implementation ensures that "Career Finder" delivers a robust, efficient, and user-centric career guidance experience.

The screenshot displays a web interface for 'Careerflow.ai'. At the top, there are navigation links for 'Home', 'Create', and 'Sign Up'. The main content area features a purple header for 'Critical Thinking' followed by the question: 'Can you describe a situation where you faced a complex problem?'. Below the question are four text input fields with the following prompts: 'Analyze and break down the problem', 'Ignore the problem', 'Seek external help', and 'Other'. At the bottom of the form is a purple button labeled 'Skip Question'.

## V. COLLABORATION AND WORKFLOW

The successful development of the "Career Finder" platform hinged on a well-orchestrated collaboration and a rigorous workflow, ensuring both efficiency and quality. Effective project management was paramount, establishing a structured approach to navigate the complexities of developing a multifaceted system. This was achieved through the strategic deployment of project management tools such as Trello or Jira, which facilitated

meticulous issue tracking, detailed monitoring of progress, and precise task assignment. These tools provided a centralized platform for the team to organize and prioritize work, ensuring that all members were aligned and informed. To foster seamless communication and maintain a cohesive development environment, regular sync meetings were conducted. These meetings served as crucial forums for team members to exchange updates, address challenges, and coordinate efforts, ensuring that all modules were being developed in a harmonized manner. Furthermore, a shared GitHub repository was established, serving as the central hub for the codebase. This repository was structured with dedicated branches for each module, enabling parallel development and fostering a collaborative coding environment. To maintain code consistency and readability, strict documentation and coding standards were implemented. These standards ensured that all team members adhered to a uniform coding style, facilitating easier integration and maintenance of the codebase.

Complementing the project management efforts was a robust testing and quality assurance framework. The integrity and reliability of the "Career Finder" platform were ensured through a series of rigorous testing methods. Unit testing was employed to verify the functionality of individual modules and components, ensuring that each part of the system performed as expected in isolation. Integration testing was conducted to assess the interaction between various modules, validating the seamless flow of data and functionality across the platform. To gauge end-user satisfaction and ensure the platform met its intended purpose, user acceptance testing (UAT) was performed. This involved real users interacting with the platform and providing feedback, allowing the development team to refine the system based on practical usage. Finally, performance testing was conducted to evaluate the platform's ability to handle a large volume of users and respond promptly to requests. This testing ensured that the system could maintain its efficiency and responsiveness under peak load, guaranteeing a smooth user experience even with high traffic. The combination of these collaborative practices and thorough testing procedures ensured the development of a high-quality, reliable, and user-centric "Career Finder" platform.

## VI. CONCLUSION

The "Career Finder" platform, as presented in this paper, emerges as a pioneering solution meticulously designed to address the multifaceted challenges individuals confront in navigating the contemporary, intricate employment landscape. In an era characterized by rapid technological advancements, fluctuating industry demands, and an increasingly globalized workforce, traditional career guidance methodologies often fall short, leaving individuals adrift in a sea of overwhelming information and limited personalized support. By harnessing the transformative power of artificial intelligence, modular system architecture, and cutting-edge technologies, "Career Finder" offers a sophisticated, adaptable, and highly personalized approach to career exploration and development.

This AI-driven system leverages advanced machine learning algorithms and natural language processing techniques to conduct a thorough analysis of user profiles, extracting crucial insights into individual skills, interests, and aspirations. Simultaneously, it integrates real-time data on emerging industry trends, evolving skill requirements, and labor market dynamics, ensuring that career recommendations are not only tailored to individual needs but also aligned with current and future market demands. The platform's modular architecture, comprising distinct yet interconnected modules for user interface, backend development, AI integration, and database management, facilitates seamless integration, scalability, and maintainability. This design philosophy enables the system to evolve and adapt, incorporating new technologies and

functionalities as the landscape of career guidance continues to transform.

"Career Finder" empowers users with the ability to make well-informed decisions regarding their professional trajectories. By providing personalized career recommendations, actionable insights, and comprehensive skill gap analyses, the platform bridges the gap between individual aspirations and market realities. It equips job seekers with the tools and resources necessary to navigate the complexities of the modern job market, fostering a sense of agency and control over their career development. Moreover, it serves as a valuable resource for career counselors, providing them with data-driven insights and analytical tools to enhance their advisory capabilities and better serve their clients.

Looking ahead, the future development of "Career Finder" will be dedicated to further enhancing its capacity and capability. This includes the exploration and integration of advanced AI models and algorithms to refine the accuracy and relevance of career recommendations. The platform will also focus on expanding its functionalities to include features such as AI-powered mock interviews, predictive career analytics, and multilingual support, broadening its accessibility and utility. Furthermore, a concerted effort will be made to develop native mobile applications, ensuring that users can access the platform's resources conveniently on their mobile devices. Continuous feedback loops and iterative development cycles will be implemented to ensure that "Career Finder" remains responsive to the evolving needs of job seekers and career counselors, solidifying its position as a leading innovation in the realm of AI-driven career guidance. By embracing innovation and prioritizing user-centric design, "Career Finder" is poised to redefine the future of career exploration and empower individuals to achieve their professional aspirations.

## VII. REFERENCES

The "Career Finder" project stands as a testament to a deeply collaborative and interdisciplinary effort, meticulously designed to synthesize cutting-edge technological advancements with rigorous scholarly research. This platform, aimed at revolutionizing personalized career guidance, is the culmination of a collective vision, where each team member brought unique skills, insights, and dedication to the table. The project's development was not merely a technical undertaking; it was a comprehensive endeavor that required a thorough understanding of both the intricacies of modern software engineering and the evolving dynamics of the contemporary job market. The team, comprising individuals with diverse backgrounds in computer science engineering, worked in synergy, drawing upon a rich tapestry of foundational research and innovative technological practices.

The development process was characterized by a meticulous approach to integrating advanced technologies, including React.js for the dynamic user interface, Flask for the robust backend APIs, and sophisticated AI models for personalized recommendations. This integration was informed by a careful study of existing literature and research, ensuring that the platform was built on a solid foundation of established knowledge. The references listed below represent a selection of the scholarly works that collectively informed the platform's design and functionality. These sources provided crucial insights into areas such as algorithm design, data processing, user interface development, and the application of artificial intelligence in career guidance.

Each individual contributor played a vital role in the project's success. Their contributions ranged from designing and implementing core functionalities to conducting thorough testing and ensuring the platform's reliability and scalability. The team's collaborative spirit was evident in the seamless integration of different modules and the efficient resolution of complex technical

challenges. Regular sync meetings, shared repositories, and standardized coding practices facilitated a cohesive and productive development environment. The team's commitment to quality and innovation ensured that "Career Finder" not only met its technical objectives but also delivered a user-centric and impactful career guidance experience. By drawing upon the foundational work referenced below, the team was able to create a platform that is both technologically advanced and deeply rooted in scholarly research, providing a valuable resource for individuals navigating the complexities of the modern job market.

- [1] D. E. Super, "A life-span, life-space approach to career development," in *Career Choice and Development*, D. Brown and L. Brooks, Eds. San Francisco: Jossey-Bass, 1990, pp. 197–261.
- [2] M. Koc, "Artificial intelligence in career counseling: A review of the literature," *Int. J. Educ. Technol. High. Educ.*, vol. 17, no. 1, pp. 1–15, 2020. DOI: 10.1186/s41239-020-00219-0.
- [3] E. Alpaydin, *Introduction to Machine Learning*, 4th ed. Cambridge: MIT Press, 2020.
- [4] D. Jurafsky and J. H. Martin, *Speech and Language Processing*, 3rd ed. Pearson, 2020.
- [5] D. A. Norman, *The Design of Everyday Things: Revised and Expanded Edition*. New York: Basic Books, 2013.
- [6] R. Buyya and J. Broberg, *Cloud Computing: Principles and Paradigms*. Wiley, 2010.
- [7] W. Stallings, *Cryptography and Network Security: Principles and Practice*, 7th ed. Pearson, 2017.
- [8] K. Beck, *Extreme Programming Explained: Embrace Change*, 2nd ed. Addison-Wesley, 2001.
- [9] M. Fowler, "Continuous integration," in *The Pragmatic Programmer: From Journeyman to Master*. Addison-Wesley, 2006, pp. 307–314.
- [10] S. C. Whiston and T. L. Sexton, "Outcome research in career counseling: A review of the literature," *The Career Development Quarterly*, vol. 46, no. 4, pp. 346–367, 1998. DOI: 10.1002/j.2161-0045.1998.tb00709.x